

- Easy to install
- Easy to operate
- Reliable

## For Ocean's Sake

### Technical Specification

#### Biological Physical Sewage Treatment Plant

#### **"Ocean Clean<sup>®</sup> UltraC-2"**

##### General design features of UltraC STPs:

- Space-saving design for corner installation
- Complete unit engineered and **MADE IN GERMANY**
- For black and grey water or black water only
- For gravity and vacuum systems
- Vacuum pump system available on request
- Customized solutions available on request
- Membrane system for best effluent values
- Compact, reliable and robust design
- Lifetime warranty on tank

##### Specifications for UltraC-2:

Designed hydraulic load: 2.7m<sup>3</sup>/d  
Designed biological load: 1.9kg BOD<sub>5</sub>/d  
Dimensions (LxWxH): 1924x1576x1561mm  
Dry weight / wet weight: Approx. 710 / 1780kg  
Power supply: 380-690V / 50/60Hz  
Power consumption: Approx. 4kW  
Tank and piping material: Stainless steel: SAE grade 304  
EN-standard steel no.: 1.4301



**Ocean Clean<sup>®</sup> - A German manufacturer of Oily Water Separators,  
Biological Sewage Treatment Plants and Waste Handling Components.**



# Biological Sewage Treatment

- **Easy to install**
- **Easy to operate**
- **Reliable**

## Contents:

1. Foreword
2. Rules and Regulations
3. STP add-ons
4. General Description
5. UltraC-2 - detailed description
6. UltraC-2 - design & calculation
7. Ocean Clean UltraC - models

Attachments: Operation scheme, P&ID, Drawings, Certificates

## 1. Foreword:

The Ocean Clean UltraC sewage treatment plant (STP) is a membrane bioreactor (MBR) that is designed and designated for the installation and operation aboard ships. The following pages show the technical specifications for the STP and its attaching parts.

## 2. Rules and Regulations:

Sewage treatment plants have to comply with IMO guidelines for effluent standards and undergo performance tests to ensure they are suitable to be operated on board of ships.

The Ocean Clean UltraC STP is type approved and certified according to MARPOL 73/78 and IMO resolution MEPC.227(64) as modified by resolution MEPC.115(51) by the German Traffic Trade Association ("BG Verkehr") - Ship Safety Division.

The UltraC can be operated on board of all ships that carry more than 15 persons or are larger than 400 GRT. **The Certificates are accepted by USCG for non US-flagged vessels.**

Effluent values of Ocean Clean UltraC in comparison with IMO regulations		
	UltraC	MEPC.227(64)
Total Suspended Solids	< 1 mg/l	35 mg/l
BOD <sub>5</sub>	< 2.8 mg/l	25 mg/l
COD	< 38 mg/l	125 mg/l
Coliforms	< 1 per 100 ml	100 per 100 ml
pH	7.45 - 8.08	6.0 - 8.5
Chlorine	0.0 (not used)	0.5 mg/l
Phosphorus	n/a	< 1 mg/l
Nitrogen	n/a	< 20 mg/l

## 3. STP add-ons:

Mandatory:

- Grease trap to remove fats and oil off the galley water
- Sludge tank to store excess sludge

Optional:

- Effluent storage tank to store cleaned water in zero-emission zones
- Grease separator for most effective fat and oil removal off galley water
- Settling tank for sludge treatment and dewatering

*When provided with an upstream aerated collecting and mixing tank to buffer peak loads the Ocean Clean UltraC-2 can handle up to 4.5m<sup>3</sup> sewage/day with identical technical specifications. Please ask for further details!*

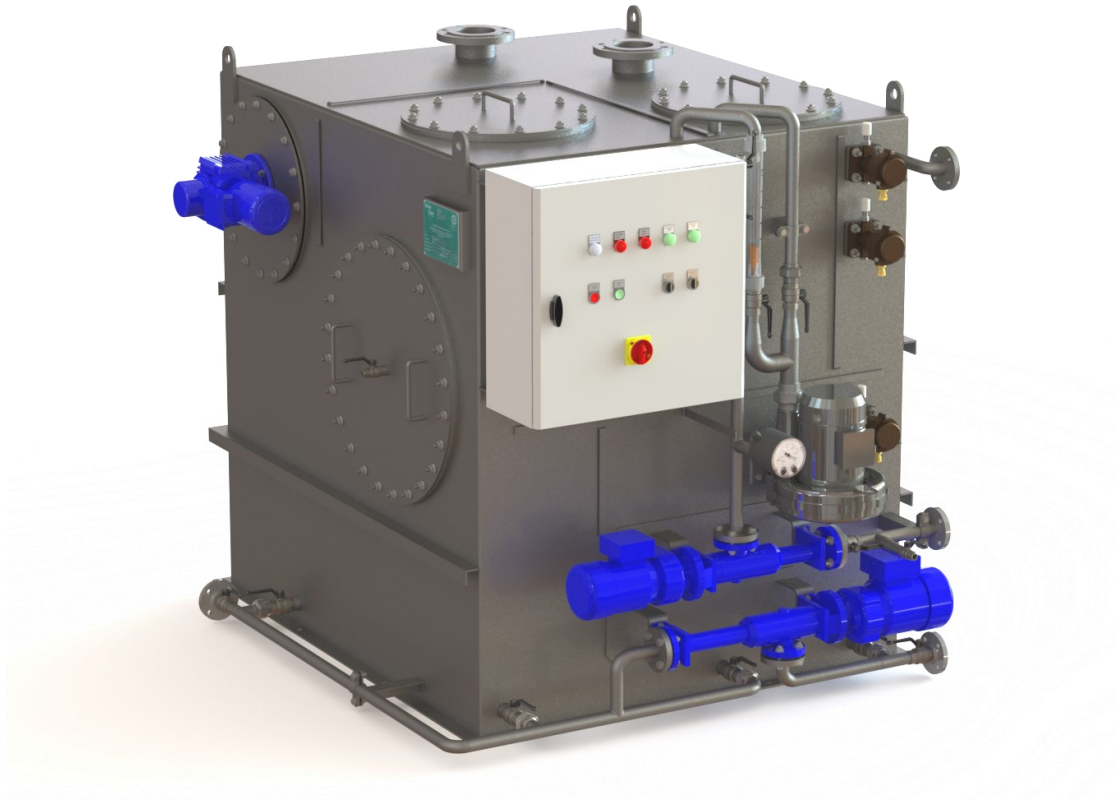


- Easy to install
- Easy to operate
- Reliable

## "Ocean Clean® UltraC-2"

Biological Physical Sewage Treatment Plant  
Membrane BioReactor (MBR)

For Illustration Only



### **4. General Description:**

All accessory units are mounted on the STP (except vacuum unit), with all internal piping and wiring, completely checked and tested, ready-for-connection. Black and grey water (no seawater!) flow to the STP by gravity (vacuum on request). Galley water must be led through a grease trap or separator. Excess sludge inside the STP must be discharged acc. instructions to a sludge tank.

The Ocean Clean UltraC is a three tank system:

First stage: Coarse material removal (stored in built-in *coarse material tank*)

Second stage: Biology activation by aerial oxygen (*activation tank*) where microorganisms ("activated sludge") metabolize the organic pollution into CO<sub>2</sub> and water.

Third stage: Membrane filtration (*membrane tank*) to physically separate cleaned water from activated sludge and bacteria. Filtrate discharge via pump to overboard/effluent tank.

**Activated sludge for starting up has to be provided by yard from municipal sewage plant!**

Ambient air is fed into the STP to support the biological process. The biology has to be checked by taking samples on a regular basis. Only biodegradable waste may be led into the STP. Excessive use of detergents or hazardous substances can destroy the biology and cause malfunctions of the STP.

*In accordance with the SOLAS regulation II-I/3-5, new installation of asbestos in context with IMO MSC.1/Circ.1374 and 1379, all materials, products and components including packaging by our company are completely free of asbestos.*



- **Easy to install**
- **Easy to operate**
- **Reliable**

## 5. "UltraC-2" - detailed description:

### Electrical system and attached parts:

- Electrical control cabinet

Including transformer (incl. 24V AC for control voltage), switches, level- and control relays, control lamps (LED), IP66 protection, door stopper, made of mild steel, Finish: coated in RAL 7035

Cable glands: with stuffing bushes acc. to DIN 89280, nickel-plated brass, reputable maker

Start-stop level for transfer pump and high level alarm are measured by level switches. One potential-free contact for a common alarm to ECR is provided.

- Fine screen

Coarse material is filtered by a **self cleaning fine screen** via brushes and electrical gear motor.

Technical details fine screen motor	
Protection class	IP 55, ISO class F
Power [kW]	0.12
Speed [rpm]	6

- Circulation and sludge discharge pump

**Circulation:** Biologically active liquid ("*activated sludge*") and sewage are circulated in the STP to be mixed and enable microorganisms to clean the water. The activation tank is constantly re-circulated to the membrane tank to supply the membrane filter with activated sludge.

**Sludge discharge:** the circulation pump is also used to discharge excess sludge and coarse material and to empty the STP.

- Filtrate pump

The **filtrate pump** is used to discharge cleaned water via the membrane filter.

Technical details circulation pump / filtrate pump		
	Circulation pump	Filtrate pump
Type	Eccentric screw pump with mechanical seal	
Flange sizes suction / discharge side	DN25, PN16	
Protection class	IP 55, ISO class F	
Capacity [m³/h] at [bar]	1.0 at 6	0.25 at 6
Power [kW at Hz]	0.55 at 50	0.37 at 50

**The filtrate pump must not be used to empty the STP!**

The membrane filter may not dry out once it has been in contact with water. The sensitive material will become brittle and cannot be used again.





# Biological Sewage Treatment

- **Easy to install**
- **Easy to operate**
- **Reliable**

## • Air blower

The air feed of the STP is supplied by **one side channel blower**. It forces ambient air into the tanks via submerged aeration elements (breather tubes) that support the biology and clean the membrane filter.

Technical details side channel blower	
Air flow [m³/h]	80
Pressure [mbar]	250
Power [kW at Hz]	1.6 at 50 / 2.05 at 60

## • Sensors

Suction pressure (**one vacuum meter**) is measured between filtrate pump and membrane filter to prevent the membrane from destruction and to determine the time for a chemical membrane cleaning.

Low level, high level and alarm level are sensed by **float switches** inside the activation tank.

## Tank:

### • The UltraC is a three tank system:

Coarse material tank including fine screen

Activation tank including aeration elements

Membrane tank including membrane filter

All tanks are accessible via manholes either on top or on the sidewalls of the tank. Flanges for inlet and ventilation pipes are on the top of the STP.

The control panel as well as all pumps, blower and instruments are located on the front or one side of the unit for easy access and a minimum footprint and maintenance space.

### • Tank and piping made of stainless steel

## Connections:

- Electrical connections: Please refer to the electrical diagram.
- The Ocean Clean UltraC is factory tested and ready-for-connection. It needs to be fixed to the floor by welding or bolting (please refer to dimensional drawing).

The following necessary pipe connections need to be produced (standard acc. to ISO/DIN):

Pipe connection	Inlet	Ventilation	Overflow	Outlet	Flushing	Discharge
Size	DN 100	DN 100	DN 25	DN 25	DN 25	DN 25
Size [pressure class]	PN16	PN16	PN16	PN16	PN16	PN16

Fresh water pressure for flushing: 2 - 5 bar





# Biological Sewage Treatment

- **Easy to install**
- **Easy to operate**
- **Reliable**

## 6. UltraC-2 - design & calculation

The Ocean Clean UltraC-2 is designed, calculated and type approved to treat a maximum hydraulic load of 2.7 m<sup>3</sup>/d and a biological load of 1.9 kg BOD<sub>5</sub>/d according to the guidelines and specifications of the German BG Verkehr as responsible authority:

Min. requirements acc. BG Verkehr	Hydraulic load [litre]					Resulting no. of persons	
	Grey Water	Black Water Vacuum	Black Water Gravity	Total Vacuum System	Total Gravity System	Vacuum System	Gravity System
Passenger vessel	160	25	70	185	230	14	11
Seagoing ship except passenger vessel	110	25	70	135	180	20	15

The Ocean Clean calculation is based on experienced data and customer feedback:

Requirements according to OC experience	Hydraulic load [litre]					Resulting No. of persons	
Barge	35	15	35	50	70	54	38
Commercial vessel	95	25	55	120	150	22	18
Naval vessel	135	20	65	155	200	17	13
Stationary Platform	175	25	70	200	245	13	11
Yacht (charter)	190	25	75	215	265	12	10
Working ship	190	25	75	215	265	12	10
River Cruiser	210	25	75	235	285	11	9
Cruiser	240	25	75	265	315	10	8
Yacht (owner)	350	25	75	375	425	7	6

Please ask for a project-specific calculation for further details and a load forecast.

To ensure a solid biological process the feeding of the Ocean Clean UltraC-2 should not fall below the following values:

Minimum required feed	Long-term	Short-term	Design maximum
Hydraulic load [m <sup>3</sup> /d]	1.5	0.8	2.7
Biological load [kg/d]	1.4	0.6	1.9

As a biological and physical system the UltraC is sensitive to the sewage quality. Intensive use of strong detergents or the inlet of chemicals (e.g. chlorine) will destroy the microorganisms of the activated sludge. Insufficient feeding may reduce the concentration of microorganisms severely and cause difficulties when feeding the STP with the standard load.

Flushing the plant and emptying it completely requires to fill in new activated sludge to restart the biological process. The quality of the activated sludge needs to be checked on a regular basis. Otherwise the membrane filter as physical barrier may clog or get damaged which will make an exchangeservice or a chemical cleaning of the filter membranes necessary.

The UltraC is designed for on-board (engine room) use: 5 - 45°C, up to 95% humidity.





- **Easy to install**
- **Easy to operate**
- **Reliable**

## 7. UltraC - models

The UltraC STP is available in different versions and sizes. Following table lists the general standard models.

Range of Ocean Clean UltraC models - other versions available on request								
Type	Max. hydraulic load [m <sup>3</sup> /d]	Max. biological load [kg BOD <sub>5</sub> /d]	Required collecting tank [m <sup>3</sup> ]	Length [mm]	Width [mm]	Height [mm]	Dry weight ca. [kg]	Wet weight ca. [kg]
UltraC-1	1.8	1.2	-	1766	1527	1555	638	1650
<b>UltraC-2</b>	<b>2.7</b>	<b>1.9</b>	-	<b>1924</b>	<b>1576</b>	<b>1561</b>	<b>710</b>	<b>1780</b>
UltraC-5	5.0	3.5	-	1935	1776	1556	1062	2495
UltraC-9	9.3	6.5	6	1935	1776	1556	1062	2495
UltraC-10	10.0	7.0	-	2132	4048	2066	1762	2995
UltraC-15	15.0	10.6	-	5483	2130	2091	2815	o/r
UltraC-27	27.8	19.6	18	5483	2130	2091	2815	o/r
UltraC-46	46.2	32.6	30.1	5938	2470	2091	o/r	o/r

### Scope of Supply:

- One STP Ocean Clean UltraC including all necessary attaching parts, ready-for-connection
- Manual and documentation in English language including drawings and spare-parts list
- Factory Acceptance Test (FAT) protocol
- Type approval and all necessary certificates
- No special tools required

### Available on request:

- Thermal dry running protection for pumps
- Vacuum system as stand-by unit (maker: Jets)
- Aeration and mixing and transfer equipment for collecting and mixing tank (transfer pumps, blower, aeration pipes, level sensors, control box)
- Blower and transfer pumps for sludge tank
- Lifting stations including controls
- Class survey certificates (ABS, DNV-GL, LR, ...)
- Worldwide commissioning and service
- Tailor-made solutions

*Please note that a sufficient maintenance space is always needed to guarantee a good access to all components. The maintenance space requirement of the Ocean Clean UltraC is very small.*

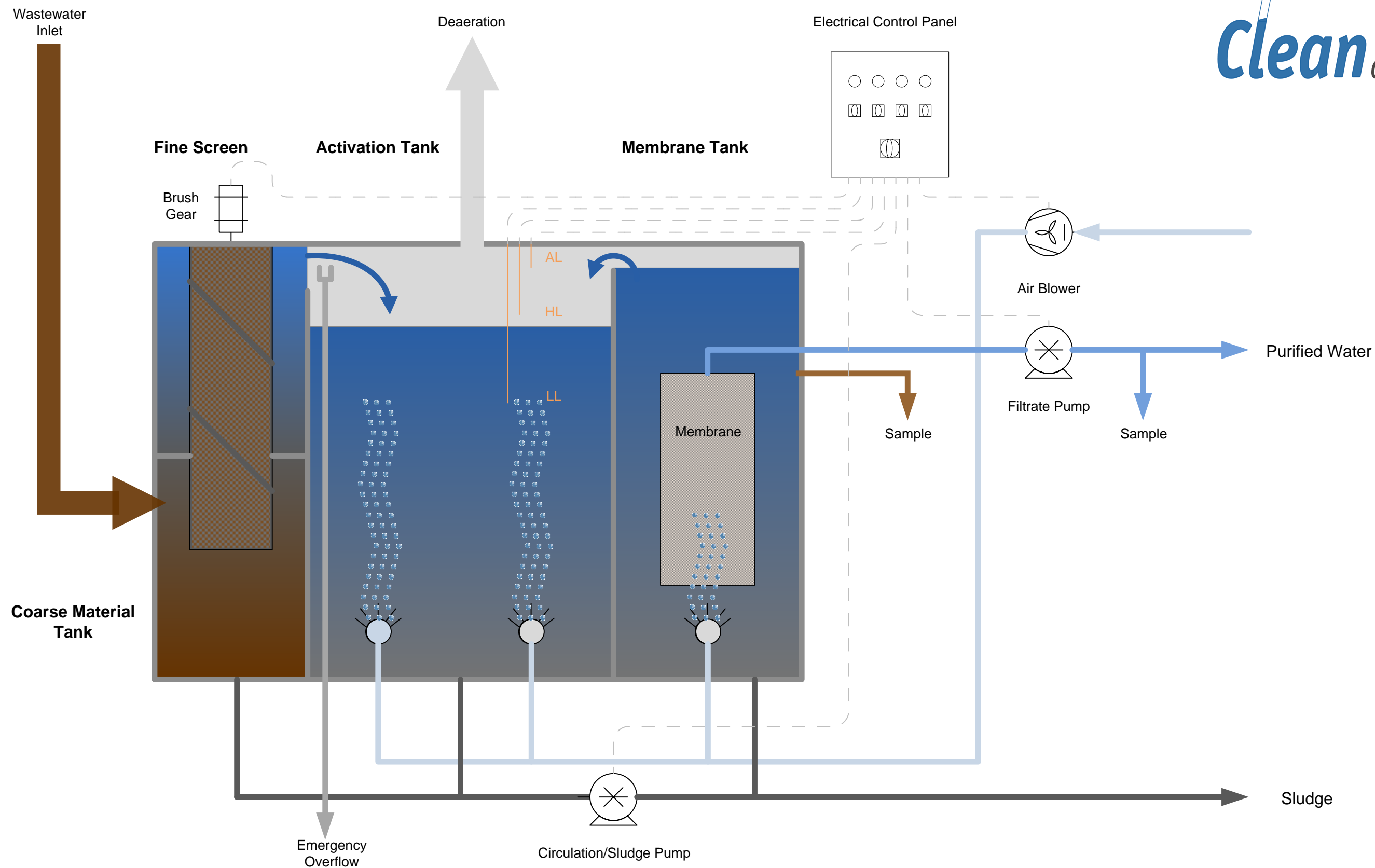
*Please note the attached drawings for details.*

Images and diagrams for illustration only. Subject to technical changes and misprints.



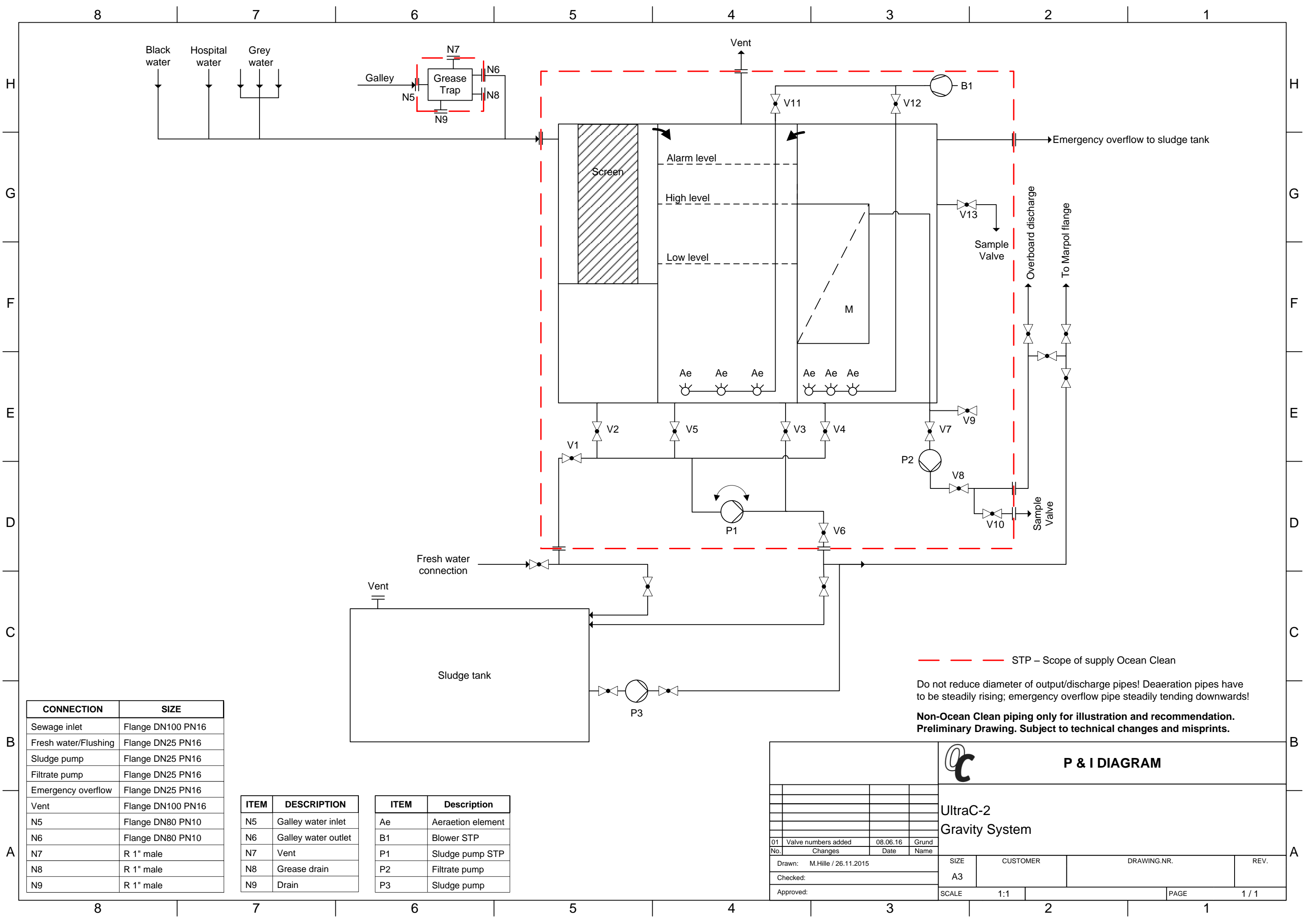
# Biological Sewage Treatment Plant UltraC Operation Scheme

*Ocean<sup>®</sup>*  
**Clean** GmbH



Black Water	Grey Water	Pre-treated Wastewater	Water Equalizing Biological Process	Filtration+Aeration	Purified Water
-------------	------------	------------------------	-------------------------------------	---------------------	----------------





CONNECTION	SIZE
Sewage inlet	Flange DN100 PN16
Fresh water/Flushing	Flange DN25 PN16
Sludge pump	Flange DN25 PN16
Filtrate pump	Flange DN25 PN16
Emergency overflow	Flange DN25 PN16
Vent	Flange DN100 PN16
N5	Flange DN80 PN10
N6	Flange DN80 PN10
N7	R 1" male
N8	R 1" male
N9	R 1" male

ITEM	DESCRIPTION
N5	Galley water inlet
N6	Galley water outlet
N7	Vent
N8	Grease drain
N9	Drain

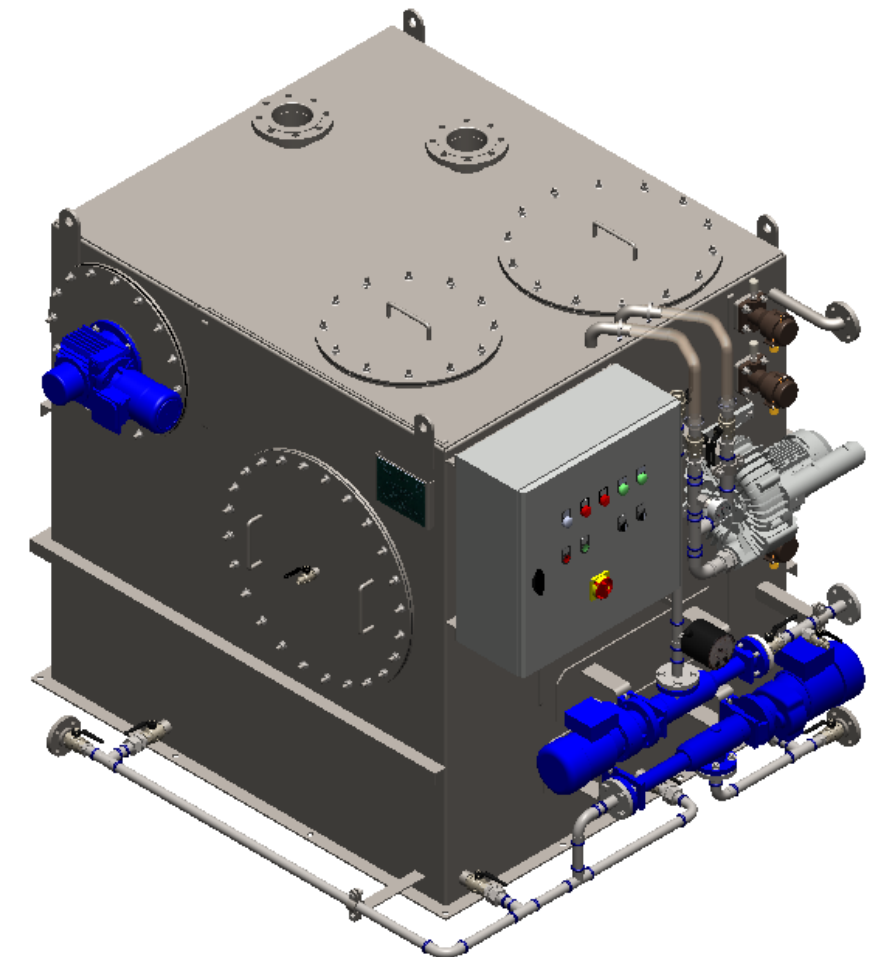
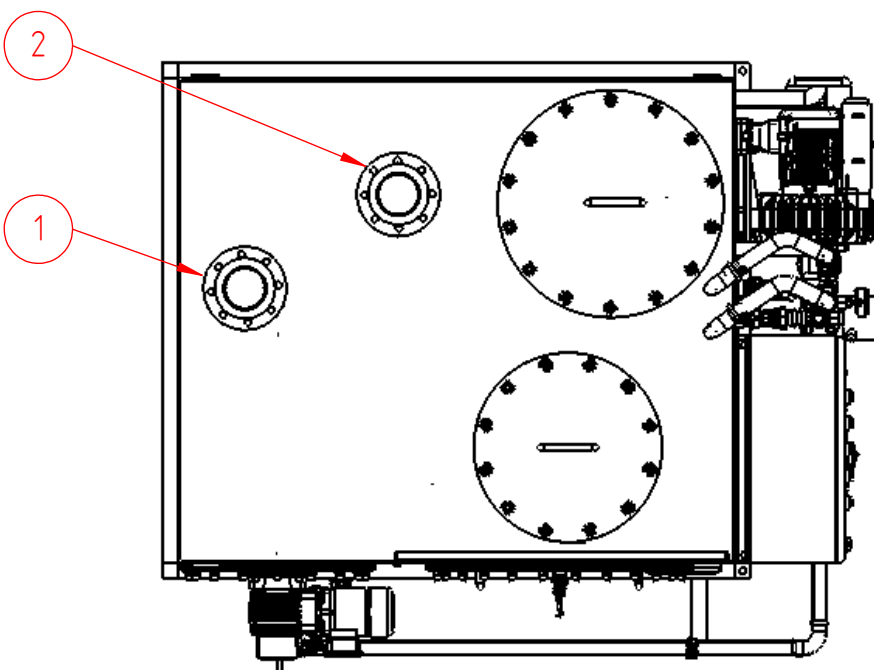
ITEM	Description
Ae	Aeraetion element
B1	Blower STP
P1	Sludge pump STP
P2	Filtrate pump
P3	Sludge pump

--- STP – Scope of supply Ocean Clean

Do not reduce diameter of output/discharge pipes! Deaeration pipes have to be steadily rising; emergency overflow pipe steadily tending downwards!

**Non-Ocean Clean piping only for illustration and recommendation. Preliminary Drawing. Subject to technical changes and misprints.**

				P & I DIAGRAM			
				UltraC-2 Gravity System			
01	Valve numbers added	08.06.16	Grund				
No.	Changes	Date	Name				
Drawn: M.Hille / 26.11.2015				SIZE	CUSTOMER	DRAWING.NR.	REV.
Checked:				A3			
Approved:				SCALE	1:1	PAGE	1 / 1

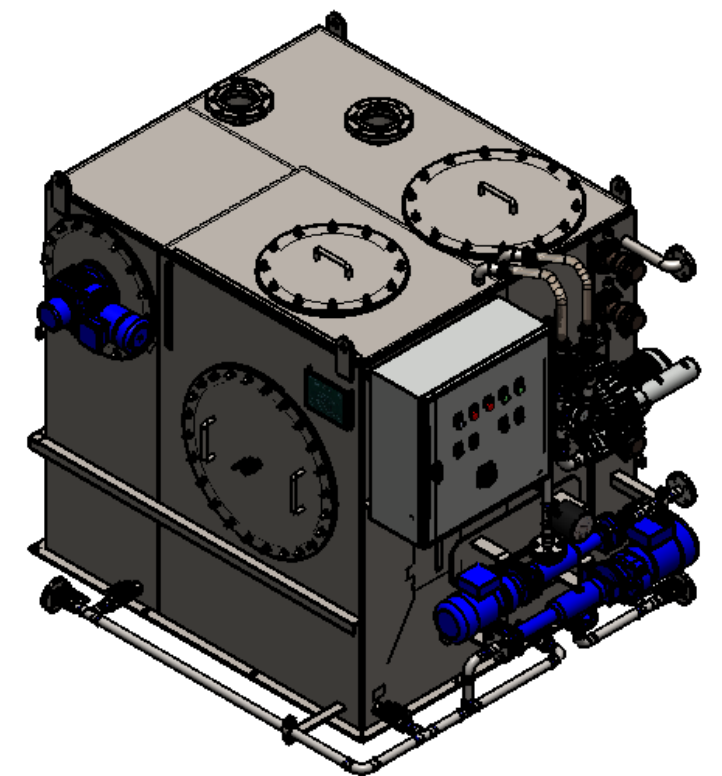
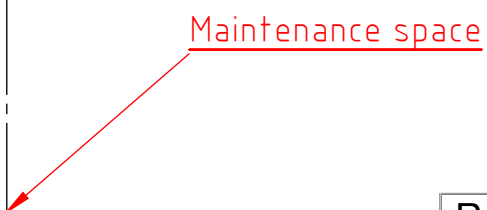
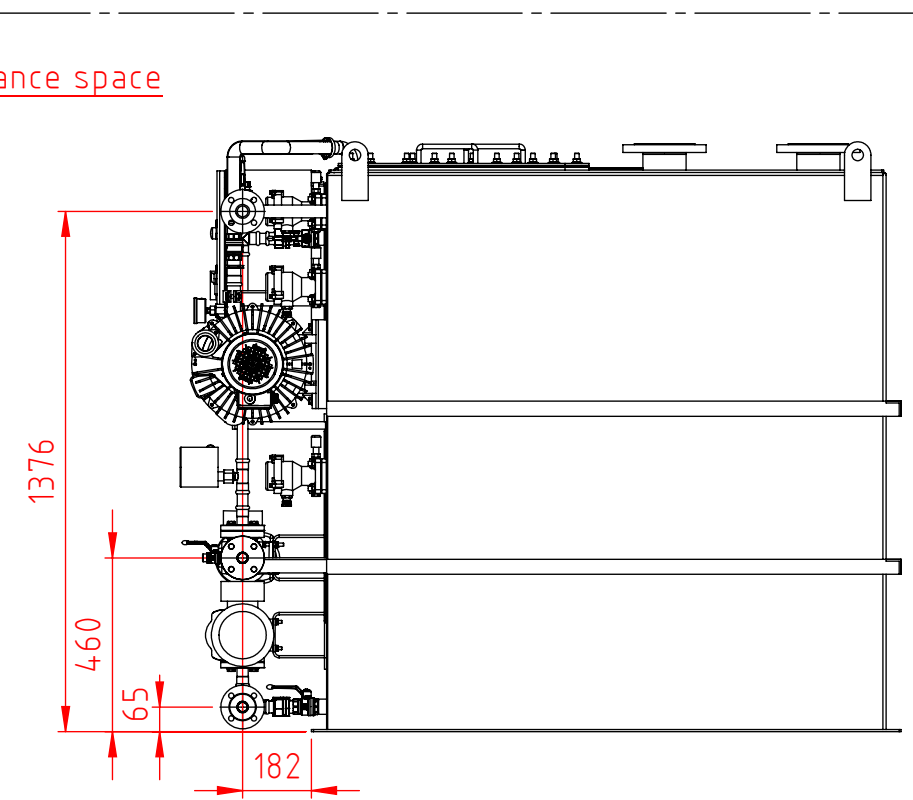


Number	Description	Size
1	Sewage Inlet	DN100/PN16
2	Deaeration	DN100/PN16
3	Flushing Connection	DN25/PN16
4	Sludge Discharge	DN25/PN16
5	Filtrate Discharge	DN25/PN16
6	Emergency Overflow	DN25/PN16

Do not reduce diameter of output/discharge pipes!
Deaeration pipe has to be steadily rising!

Revision : 1				Oberfläche:		Maßstab:1:20		Gewicht: 811.43kg	
						Werkstoff:			
					Datum	Name		UltraC-2	
				Erst.	15.06.2016	M.Hille			
				Gepr.					
				Freig.					
				Ocean Clean GmbH Zum Kühlhaus 5 18069 Rostock Germany Phone: +49 (0) 381-811 2930 Fax: +49 (0) 381-811 2939 info@oceanclean.de				OCS-u2-BG-000-01	
Index	Änderung	Datum	Name					Seite 1/2	
								A3	

Preliminary drawing. Subject to technical changes and misprints.



Revision : 1				Oberfläche:		Maßstab: 1:20		Gewicht: 811.43kg		
						Werkstoff:				
					Datum	Name	UltraC-2			
				Erst.	15.06.2016	M.Hille				
				Gepr.						
				Freig.						
				<div>Ocean Clean GmbH Zum Kühlhaus 5 18069 Rostock Germany Phone: +49 (0) 381-811 2930 Fax: +49 (0) 381-811 2939 info@oceanclean.de</div> <div></div>			OCS-u2-BG-000-01		Seite 2/2	
Index	Änderung	Datum	Name				A3			



# TYPENPRÜFUNGSZEUGNIS für Abwasser-Aufbereitungsanlagen

*Certificate of Type Approval for Sewage Treatment Plants*

Ausgestellt im Namen der Regierung  
der **BUNDESREPUBLIK DEUTSCHLAND**  
durch die **BERUFGSGENOSSENSCHAFT FÜR TRANSPORT UND VERKEHRSWIRTSCHAFT**

*Issued under the authority of the  
FEDERAL REPUBLIC OF GERMANY  
by Berufsgenossenschaft für Transport und Verkehrswirtschaft*

Hiermit wird bescheinigt, dass die Abwasser-Aufbereitungsanlage  
*This is to certify that the sewage treatment plant*

Typ: ..... **UltraC-2** .....  
type: .....

Ausgelegter Flüssigkeitsdurchsatz: ..... 2,7 m<sup>3</sup>/Tag .....  
having a designed hydraulic loading of: ..... m<sup>3</sup>/d .....

Durchsatz an organischen Stoffen: ..... 1,9 kg/Tag biochemischer Sauerstoffbedarf (BSB<sub>5</sub>, ohne Nitrifikation) .....  
an organic loading of: ..... kg per day biochemical oxygen demand (BOD<sub>5</sub>, without nitrification) .....

Auslegung gemäß Zeichnungen Nrn.: ..... ocs-c15-BG000 .....  
and of the design shown on drawings Nos.: .....

Hergestellt durch: ..... Ocean Clean GmbH, Zum Kühlhaus 5, 18069 Rostock .....  
manufactured by: .....

einer Prüfung unterzogen und in Übereinstimmung mit der IMO-EntschlieÙung MEPC.227(64), um die Anforderungen an den Betrieb gemäß Regel 9.1.1 und 9.2.1 MARPOL Anlage IV des Internationalen Übereinkommens zur Verhütung der Meeresverschmutzung durch Schiffe, 1973, geändert durch die Protokolle von 1978 und 1997 (in der geänderten Fassung der EntschlieÙung MEPC.115(51) und MEPC.200(62), zu erfüllen, zufriedenstellend erprobt wurde.

*has been examined and satisfactorily tested in accordance with the International Maritime Organization resolution MEPC.227(64) to meet the operational requirements referred to in Regulation 9.1.1 and 9.2.1 of MARPOL Annex IV of the International Convention for the Prevention of Pollution from Ships, 1973, as modified by the 1978 and 1997 Protocols (as amended by resolutions MEPC.115(51) and MEPC.200(62)).*

Die Erprobungen der Abwasser-Aufbereitungsanlage wurden durchgeführt  
*The tests on the sewage treatment plant were carried out*

an Land bei\*: ..... Klärwerk Wismar - Wendorf .....  
ashore at: .....

an Bord von\*: ..... -- .....  
on board at: .....

und abgeschlossen am: ..... 02.07.2011 .....  
and completed on: .....

Zulassungs-Nr.: 340.462  
Certificate-No.:

\* nicht zutreffendes streichen  
*Delete as appropriate*

Bei der Erprobung wurde ein Abfluss festgestellt, der nach der analytischen Untersuchung folgende Ablaufwerte hat:

*The sewage treatment plant was tested and produced an effluent which, on analysis, produces:*

- (.1) ein geometrisches Mittel von nicht mehr als 100 fäkalkoliforme (thermo-toleranten) Bakterien/100 ml  
(.1) *a geometric mean of no more than 100 thermo tolerant coliforms/100 ml;*
- (.2) ein geometrisches Mittel der gesamten Schwimm- und Schwebstoffe von 35 Qi/Qe mg/l für an Land getestete Anlagen oder der Maximalwert der gesamten Schwimm- und Schwebstoffe übersteigt nicht (35 plus x) Qi/Qe mg/l für das umgebende Wasser, das für Spülzwecke verwendet wird, bei Tests an Bord  
(.2) *a geometric mean of total suspended solids of 35 Qi/Qe mg/l if tested ashore or the maximum total suspended solids not exceeding (35 plus x) Qi/Qe mg/l for the ambient water used for flushing purposes if tested on board*
- (.3) ein geometrisches Mittel des Biochemischen Sauerstoffbedarfs nach fünf Tagen ohne Nitrifikation (BSB<sub>5</sub> ohne Nitrifikation) mit nicht mehr als 25 Qi/Qe mg/l  
(.3) *a geometric mean of 5-day biochemical oxygen demand without nitrification (BOD<sub>5</sub> without nitrification) of no more than 25 Qi/Qe mg/l*
- (.4) ein geometrisches Mittel des Chemischen Sauerstoffbedarfs (COD) mit nicht mehr als 125 Qi/Qe mg/l  
(.4) *a geometric mean of chemical oxygen demand (COD) of no more than 125 Qi/Qe mg/l*
- (.5) der pH-Wert liegt zwischen 6 und 8,5  
(.5) *pH between 6 and 8,5*
- (.6) ~~ein geometrisches Mittel des gesamten Stickstoff von nicht mehr als 20 Qi/Qe mg/l oder mindestens 70 % Reduktion, u.~~  
(.6) *a geometric mean of total nitrogen of no more than 20 Qi/Qe mg/l or at least 70 per cent reduction; and*
- (.7) ~~ein geometrisches Mittel des gesamten Phosphor von nicht mehr als 20 Qi/Qe mg/l oder mindestens 80 % Reduktion~~  
(.7) *a geometric mean of total phosphorus of no more than 1,0 Qi/Qe mg/l or at least 80 per cent reduction\*\**

Die Verwaltung bescheinigt, dass die Anlage bei Neigungen bis zu 22,5° in jede Richtung von der normalen Aufstellung arbeiten kann.

*The Administration confirms that the sewage treatment plant can operate at angles of inclination of 22.5° in any plane from the normal operating position.*

Einzelheiten der Erprobungen und der einzelnen Ergebnisse werden im Anhang aufgezeigt.

*Details of the tests and the results obtained are shown on the Appendix to this certificate.*

Ein Schild oder ein haltbarer Aufkleber muss an jeder Abwasser-Aufbereitungsanlage angebracht sein mit Angaben über den Hersteller, Typ und die Seriennummern, den Flüssigkeitsdurchsatz und das Herstellungsdatum.

*A plate or durable label containing data of the manufacturer's name, type and serial numbers, hydraulic loading and date of manufacture should be fitted on each sewage treatment plant.*

Eine Kopie dieses Zeugnisses muss auf jedem Schiff mitgeführt werden, das mit der oben beschriebenen Abwasser-Aufbereitungsanlage ausgerüstet ist.

*A copy of this certificate shall be carried on board any ship equipped with the above described sewage treatment plant.*

Dieses Typenprüfungszeugnis gilt bis:

**30.09.2020**

*This certificate of type test is valid until*

Dieses Typenprüfungszeugnis bleibt über das vorstehende Datum hinaus in Kraft, sofern kein Widerruf erfolgt.

Ein Widerruf für auf einem Schiff eingebaute Einrichtungen kann z.B. erfolgen, wenn diese nicht gefahren und/oder nicht gewartet und/oder nicht funktionsbereit sind und/oder nicht innerhalb einer angemessenen Frist an zukünftige Bestimmungen angepasst werden können.

*This certificate of type test is in force beyond the above mentioned date unless it is revoked.*

*A revocation of the equipment installed aboard the ship can follow, but is not limited to, if the equipment is not maintained and/or is not in good working order and/or the equipment can not be modified within an appropriate time frame, due to future regulatory standards.*

**\*\* ist zu streichen für Schiffe, die keine Fahrgastschiffe sind die beabsichtigen Abwasser in Sondergebieten einzuleiten**  
*Delete for ships other than passenger ships intending to discharge sewage effluent in Special Areas*

Das Typenprüfungszeugnis für Type UltraC-2 wird aufgrund der Erprobung von Type OCS-compact 15 gemäß IMO-Entschließung MEPC.227(64) Anhang Pkt. 5.8 ausgestellt.

*The certificate of type test of type UltraC-2 will be issued based on the test of type OCS-compact 15 according to IMO-Resolution MEPC.227(64) annex 5.8.*

Ausgestellt in Hamburg am 01.10.2015  
*Issued at Hamburg on*



**BERUFGENOSSENSCHAFT FÜR TRANSPORT  
UND VERKEHRSWIRTSCHAFT  
- DIENSTSTELLE SCHIFFSSICHERHEIT -**

  
\_\_\_\_\_  
Unterschrift  
*Signature*

Die Abwasser-Aufbereitungsanlage Serien-Nr. \_\_\_\_\_  
*The sewage treatment plant serial No.*

entspricht dem geprüften Typ.  
*complies with the tested type.*

\_\_\_\_\_  
Ort  
*Place*

\_\_\_\_\_  
Datum  
*date*

\_\_\_\_\_  
Firmen-  
stempel  
*Company  
stamp*

\_\_\_\_\_  
Unterschrift  
*Signature*





# TYPENPRÜFUNGSZEUGNIS für Abwasser-Aufbereitungsanlagen

*Certificate of Type Test for Sewage Treatment Plants*

## ANHANG zu Type: UltraC-2 Appendix to type: UltraC-2

**Prüfergebnisse und Einzelheiten der Erprobungen, geprüft mit Hilfe von Proben  
der Abwasser-Aufbereitungsanlage in Übereinstimmung  
mit der EntschlieÙung MEPC.227(64)**

*Test results and details of tests conducted on samples from the sewage treatment  
plant in accordance with resolution MEPC.227(64)*

Abwasser-Aufbereitungsanlage, Typ: OCS-compact 15  
*Sewage treatment plant, Type:*

Hergestellt durch: Ocean Clean GmbH, Zum Kühlhaus 5, 18069 Rostock  
*Manufactured by:*

Stelle, die die Prüfung durchgeführt hat: BG Verkehr, Dienststelle Schiffssicherheit  
*Organization conducting the test:*

Ausgelegter Flüssigkeitsdurchsatz <i>Designed hydraulic loading</i>	<u>2,7</u>	Kubikmeter pro Tag <i>cubic metres per day</i>
Ausgelegter Durchsatz an organischen Stoffen <i>Designed organic loading</i>	<u>1,9</u>	Kilogramm pro Tag BSB <i>kilograms per day BOD</i>
Anzahl der untersuchten Ausflussproben <i>Number of effluent samples tested</i>	<u>40</u>	
Anzahl der untersuchten Einlaufproben <i>Number of influent samples tested</i>	<u>40</u>	
Abwasserqualität (Einlauf), TSS <i>Total suspended solids influent quality</i>	<u>2575</u>	Milligramm pro Liter Schwebestoffe <i>milligrams per litre Total Suspended Solids</i>
Gesamtstickstoff am Einlauf <i>Total nitrogen influent quality</i>	<u>n.a.</u>	Milligramm pro Liter als Stickstoff* <i>milligrams per litre as nitrogen*</i>
Gesamtposphat am Einlauf <i>Total phosphorus influent quality</i>	<u>n.a.</u>	Milligramm pro Liter als Phosphat* <i>milligrams per litre as phosphorus*</i>
BSB <sub>5</sub> ohne Nitrifikation am Einlauf <i>BOD<sub>5</sub> without nitrification influent quality</i>	<u>704</u>	Milligramm pro Liter <i>milligrams per litre</i>
Maximaler Flüssigkeitsdurchsatz <i>Maximum hydraulic loading</i>	<u>2,7</u>	Kubikmeter pro Tag <i>cubic metres per day</i>
Mindest-Flüssigkeitsdurchsatz <i>Minimum hydraulic loading</i>	<u>--</u>	Kubikmeter pro Tag <i>cubic metres per day</i>
Durchschnittlicher Flüssigkeitsdurchsatz <i>Average hydraulic loading</i>	<u>2,7</u>	Kubikmeter pro Tag <i>cubic metres per day</i>
Abwasserauslauf (Q <sub>e</sub> ) <i>Effluent flow (Q<sub>e</sub>)</i>	<u>2,7</u>	Kubikmeter pro Tag <i>cubic metres per day</i>

\* nicht zutreffendes streichen  
*Delete as appropriate*

Verdünnungsausgleichsfaktor (Qi/Qe) <i>Dilution compensation factor (Qi/Qe)</i>	1	
Geometrisches Mittel der gesamten Schwimm- und Schwebstoffe <i>Geometric mean of total suspended solids</i>	1	Milligramm pro Liter <i>milligrams per litre</i>
Geometrisches Mittel der fäkalcoliformen (thermo-toleranten) Bakterienzahl <i>Geometric mean of the thermotolerant coliform count</i>	1	Bakterien pro 100 Milliliter <i>coliforms per 100 millilitres</i>
Geometrisches Mittel des BSB <sub>5</sub> ohne Nitrifikation <i>Geometric mean of BOD<sub>5</sub> without nitrification</i>	2.8	Milligramm pro Liter <i>milligrams per litre</i>
Geometrisches Mittel des COD <i>Geometric mean of COD</i>	37.5	Milligramm pro Liter <i>milligrams per litre</i>
Geometrisches Mittel des Gesamtstickstoffs <i>Geometric mean of total nitrogen</i>	n.a.	Milligramm pro Liter* oder Prozent* <i>milligrams per litre* or per cent*</i>
Geometrisches Mittel des Gesamtposphors <i>Geometric mean of total phosphorus</i>	n.a.	Milligramm pro Liter* oder Prozent* <i>milligrams per litre* or per cent*</i>
Höchster pH-Wert <i>Maximum pH</i>	8.08	
Niedrigster pH-Wert <i>Minimum pH</i>	7.45	
Art des verwendeten Desinfektionsmittels <i>Type of disinfectant used</i>	--	
Wenn Chlor - verbleibendes Chlor: <i>If Chlorine - residual Chlorine:</i>		
Maximum <i>Maximum</i>	--	Milligramm pro Liter <i>milligrams per litre</i>
Mindestwert <i>Minimum</i>	--	Milligramm pro Liter <i>milligrams per litre</i>
Geometrisches Mittel <i>Geometric Mean</i>	--	Milligramm pro Liter <i>milligrams per litre</i>
Wurde die Abwasser-Aufbereitungsanlage geprüft mit: <i>Was sewage treatment plant tested with:</i>		
Frischwasserspülung? <i>Fresh water flushing?</i>	ja/yes <input checked="" type="checkbox"/>	nein/no <input type="checkbox"/> *
Salzwasserspülung? <i>Salt water flushing?</i>	ja/yes <input type="checkbox"/>	nein/no <input checked="" type="checkbox"/> *
Frisch- und Salzwasserspülung? <i>Fresh and salt water flushing?</i>	ja/yes <input type="checkbox"/>	nein/no <input checked="" type="checkbox"/> *
Wurde Grauwasser zugegeben? <i>Grey water added?</i>	ja/yes <input checked="" type="checkbox"/> - Anteil % - proportion	nein/no <input type="checkbox"/> *

\* nicht zutreffendes streichen  
*Delete as appropriate*

Wurde die Abwasser-Aufbereitungsanlage geprüft nach den Umweltbedingungen die in Abschnitt 5.9 der Entschließung MEPC.227(64) festgelegt sind:

Was the sewage treatment plant tested against the environmental conditions specified in section 5.9 of resolution MEPC.227(64):

Temperatur Temperature	ja/yes <input checked="" type="checkbox"/>	nein/no <input type="checkbox"/> *
Luftfeuchtigkeit Humidity	ja/yes <input checked="" type="checkbox"/>	nein/no <input type="checkbox"/> *
Krängung Inclination	ja/yes <input checked="" type="checkbox"/>	nein/no <input type="checkbox"/> *
Vibration Vibration	ja/yes <input checked="" type="checkbox"/>	nein/no <input type="checkbox"/> *
Funktionssicherheit der elektr. und elektronischen Bauteile Reliability of Electrical and Electronic Equipment	ja/yes <input checked="" type="checkbox"/>	nein/no <input type="checkbox"/> *

#### Beschränkungen und Betriebsbedingungen

Limitations and the conditions of operation are imposed:

Salzgehalt Salinity	--
Temperatur Temperature	5 - 45 °C
Luftfeuchtigkeit Humidity	--
Krängung Inclination	--
Vibration Vibration	--

Ergebnisse anderer geprüfter Parameter: keine  
Results of other parameters tested none

Auferlegte Einschränkungen:  
Limiting conditions imposed:

keine

non

Ausgestellt in: Hamburg  
Issued at:

am: 01.10.2015  
on:



  
Berufsgenossenschaft für Transport  
und Verkehrswirtschaft  
- Dienststelle Schiffssicherheit -

\* nicht zutreffendes streichen  
Delete as appropriate





European notified body  
Identification number 0736

## EC-Type Examination (Module B) Certificate

Certificate-No.

340.462

Name and address of the manufacturer: Ocean Clean GmbH, Zum Kühlhaus 5, 18069 Rostock, Germany

Date of issue: 01.10.2015

Annex A.1 Item No & Item designation: A.1/2.6 – Sewage treatment plants

Product designation: Sewage treatment plant

Product Type: UltraC-2

Intended purpose: Sewage treatment plants for ships acc. MARPOL 73/78, Annex IV and Helsinki-Convention

Testing based on (Specific standard): IMO Resolution MEPC.227(64) for sewage treatment plants in acc. with MARPOL 73/78, Annex IV, Reg. 9

Remarks:

The type tested was found to be in compliance with the Marine-pollution prevention requirements of Marine Equipment Directive (MED) 96/98/EC as amended by Directive 2014/93/EC subject to any conditions in the scope (part of this certificate).

This certificate may only be used in connection with module(s) **D or F or E** of this directive

Expiry date: 30.09.2020



Signature (Selfert)

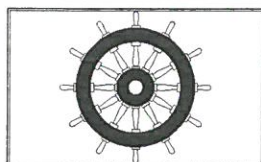


Installed equipment stays approved beyond the validity date until it is revoked!

**Note 1:** This certificate will not be valid if the manufacturer makes any changes or modifications to the approved equipment, which have not been notified to, and agreed with the notified body named on this certificate.

**Note 2:** Should the specified regulations or standards be amended during the validity of this certificate, the product(s) is/are to be re-approved prior to it/they being placed on board vessels to which the amended regulations or standards apply.

**Note 3:** The Mark of Conformity may only be affixed to the above type approved equipment and a Manufacturer's Declaration of Conformity issued when the production-control phase module (D, E, or F) of ANNEX B of the Directive is fully complied with and controlled by a written inspection agreement with a notified body.



xxxx/yy

**Note 4: "Wheelmark" Format**

YY Last two digits of year mark affixed.

XXXX Notified Body number undertaking surveillance module

**Technical data/approved drawings and  
additional conditions and remarks:**

The Prüf- und Zertifizierungsstelle of the BG Transport und Verkehrswirtschaft verifies and certifies the conformity of the above mentioned product in accordance with the Directive 96/98/EC of the Council as amended (last amendment by directive 2014/93/EC), Annex B, Module D or Module F (Product Verification), section 5, Statistical Verification.

All products will be divided into identical lots of 10 pieces each, starting with serial number OCS-YYMM-0101-XXXX. One (1) random sample will be drawn from each lot and individually examined.

- Easy to install
- Easy to operate
- Reliable

## For Ocean's Sake

### Ocean Clean Grease Trap "FT-50"

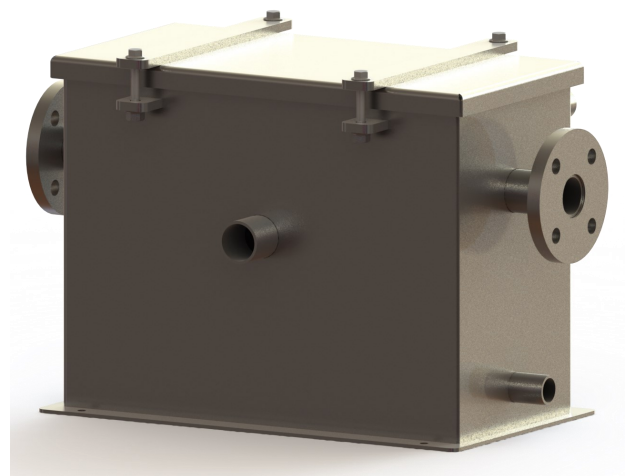
#### Design features:

- Compact and solid unit *MADE IN GERMANY*
- No moving parts
- No spare parts required
- Easy access for simple cleaning
- Customized solutions available on request
- Available in capacities from 0.1—1.0 m<sup>3</sup>/h
- Reliable and well known design in dependence on German DIN 4040 and DIN-EN 1825

#### General technical specifications for FT-50

##### (customized solutions available):

- Volume: 0.05m<sup>3</sup>
- Dimensions (LxWxH): 660x344x420mm
- Dry weight: 37kg
- Made of 1.4301
- Grease discharge at the top
- Cover removable
- Draining connection at the bottom



Ocean Clean<sup>®</sup>—A german manufacturer of Oily Bilge Separators and Biological Sewage Treatment Plants.

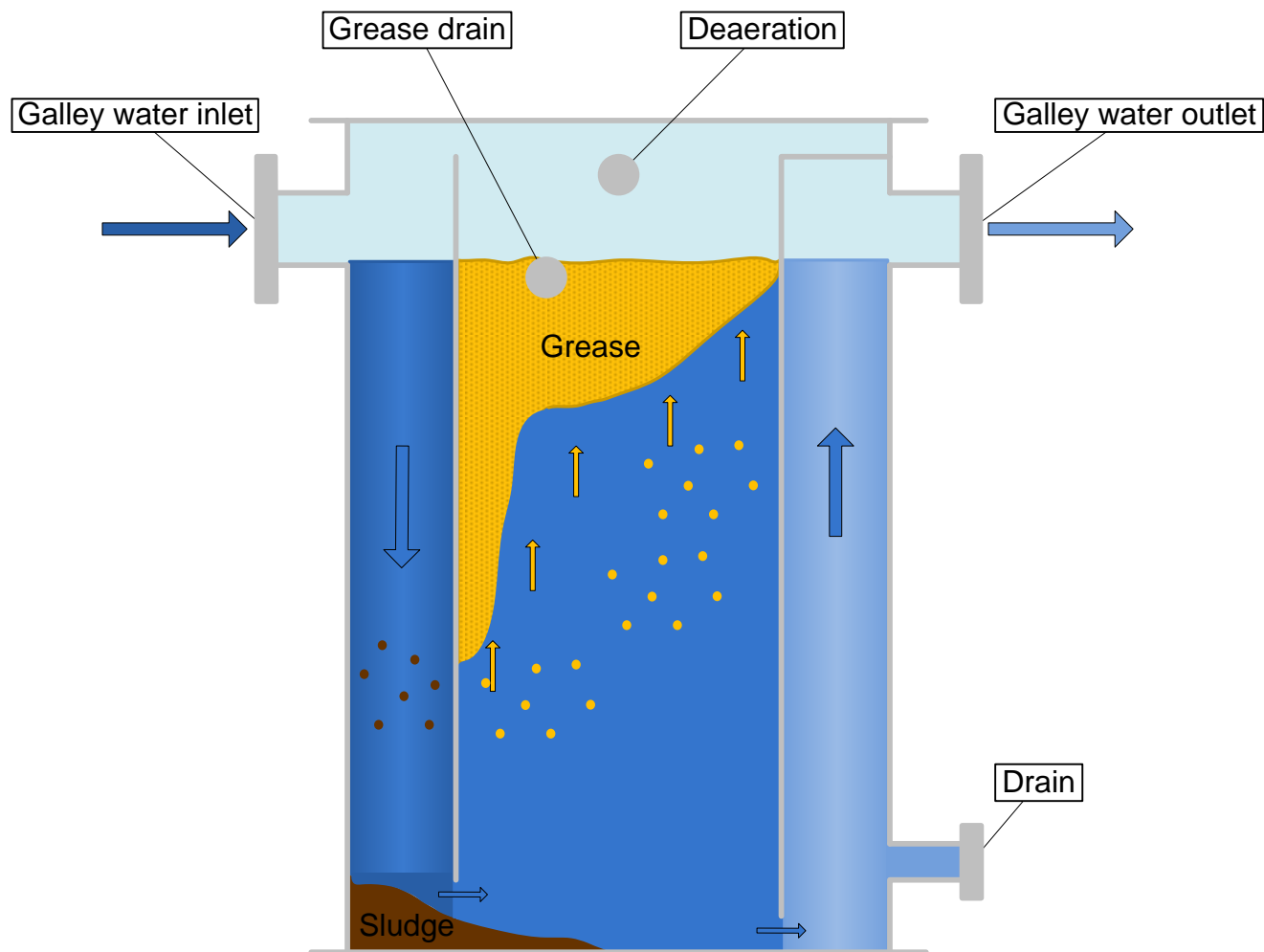




# Fat Trap

## Operation Scheme

*Ocean*<sup>®</sup>  
**Clean** GmbH



A grease trap removes fat, oil and grease (called FOG) and solids (food particles, sand and grit etc.) by a gravity separation process.

The grease trap slows down the flow of waste water long enough for the FOG and solids to separate. The solids settle to the bottom and the grease floats to the top. The middle layer is free water which is discharged to the sewer.

The longer the flow is kept inside the trap, the better job it will do of separating the waste materials.

